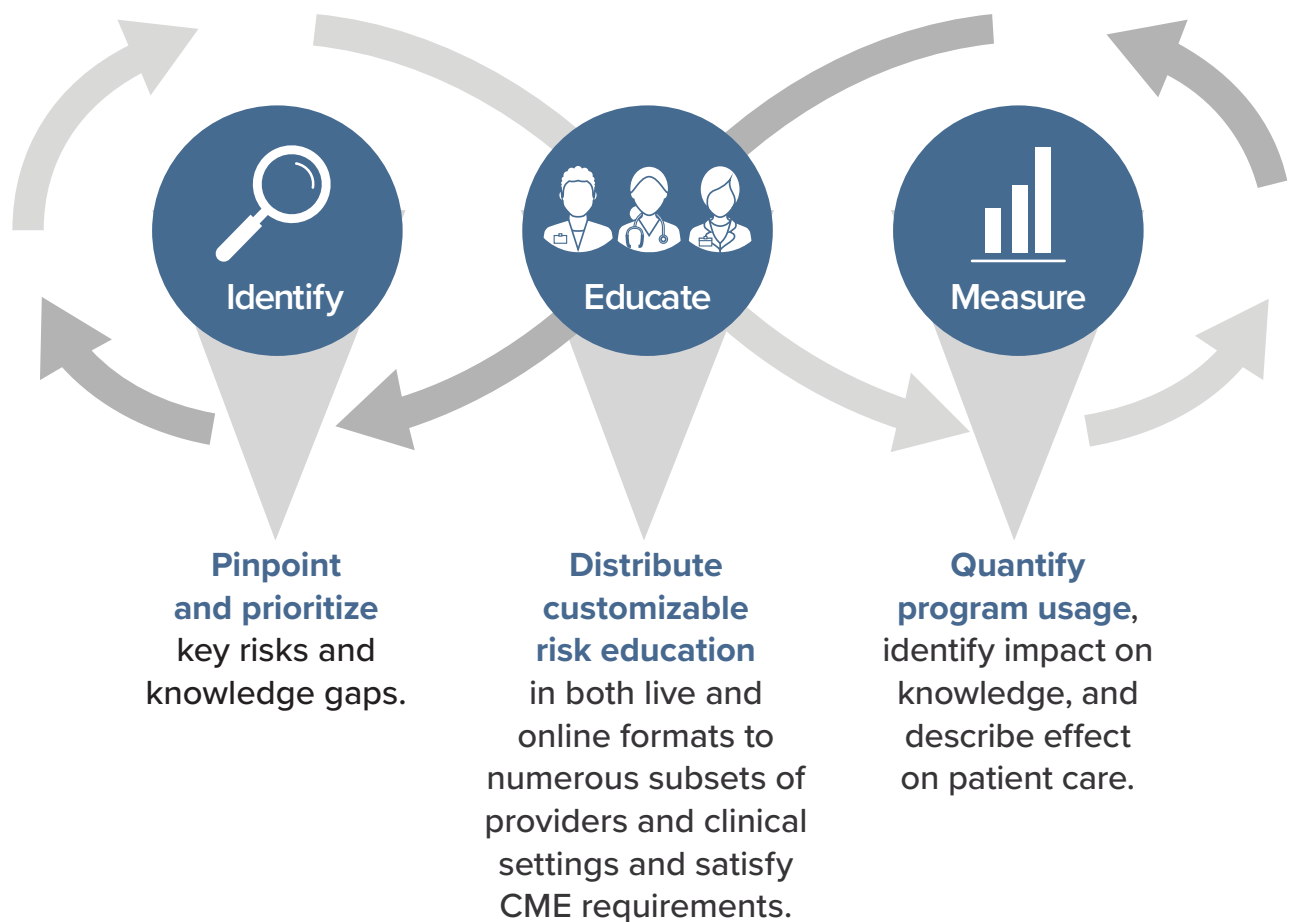


Med-IQ's courses deliver clinical risk education in a targeted, customizable, and easy-to-access format.



### Med-IQ's three-tiered strategy:



Interested in live education? We can help. Contact us to learn more.

To see a customized sampling of available courses based on your unique needs, please access our interactive **Course Information Tool** by visiting [www.med-iq.com/courses](http://www.med-iq.com/courses) or by scanning here:



## Trending Risk/High-Demand Topics

- Appropriate Use of Chaperones
- Dangerous Workarounds That Develop Around Staffing and Materials Shortages
- Diagnostic Error
- Health Equity
- Implicit Bias
- Minor Mental Health
- Patient Dismissal and From Practice
- Risk Implications of Cures Act 2021
- Virtual Medicine/Telemedicine
- Workplace Violence

## Risk and Patient Safety Course Topics

- Behavioral Health
- Communication
- Conflict Resolution
- Consultation and Referral
- Diagnostic Error
- Documentation
- End-of-Life Issues
- Controllable Factors That Impact Clinician Wellness
- Healthcare Law and Regulation
- Human Factors
- Informed Consent and Refusal
- Medication Safety
- Opioid Safety
- Pain Management
- Perioperative Safety
- Post-Event Strategies
- Professionalism and Ethics
- Scope of Practice
- Sepsis Risk Management
- Supervision
- Workplace Violence

## Medical Specialties Covered

- Anesthesia
- Behavioral Health—Inpatient
- Behavioral Health—Outpatient
- Dentistry
- Emergency Room and Urgent Care
- Medicine—Inpatient (i.e hospitalists)
- Medicine—Outpatient (ie ambulatory-based medicine)
- Pathology (noninterventional)
- Obstetrics
- Pediatrics—Inpatient
- Pediatrics—Outpatient
- Podiatry
- Procedural Medicine—Inpatient (ie operating room, catheter lab, interventional radiology)
- Procedural Medicine—Outpatient (ie ambulatory surgical center, catheter lab, interventional radiology)
- Radiology (noninterventional)

## Target Audiences

- Advanced Practice Professionals\*
- Nurses\*
- Residents\*\*
- Physicians\*

## Clinical Settings Addressed

- Academic Medical Center
- Acute Care
- Ambulatory Care/Office Practice
- Ambulatory Surgery Center
- Behavioral Health Facility
- Children's Hospital
- Emergency Room and Urgent Care

\*CME, CME/CE—both interdisciplinary and role-specific

\*\*CLR-aligned and risk management-themed GME programs organized by PGY