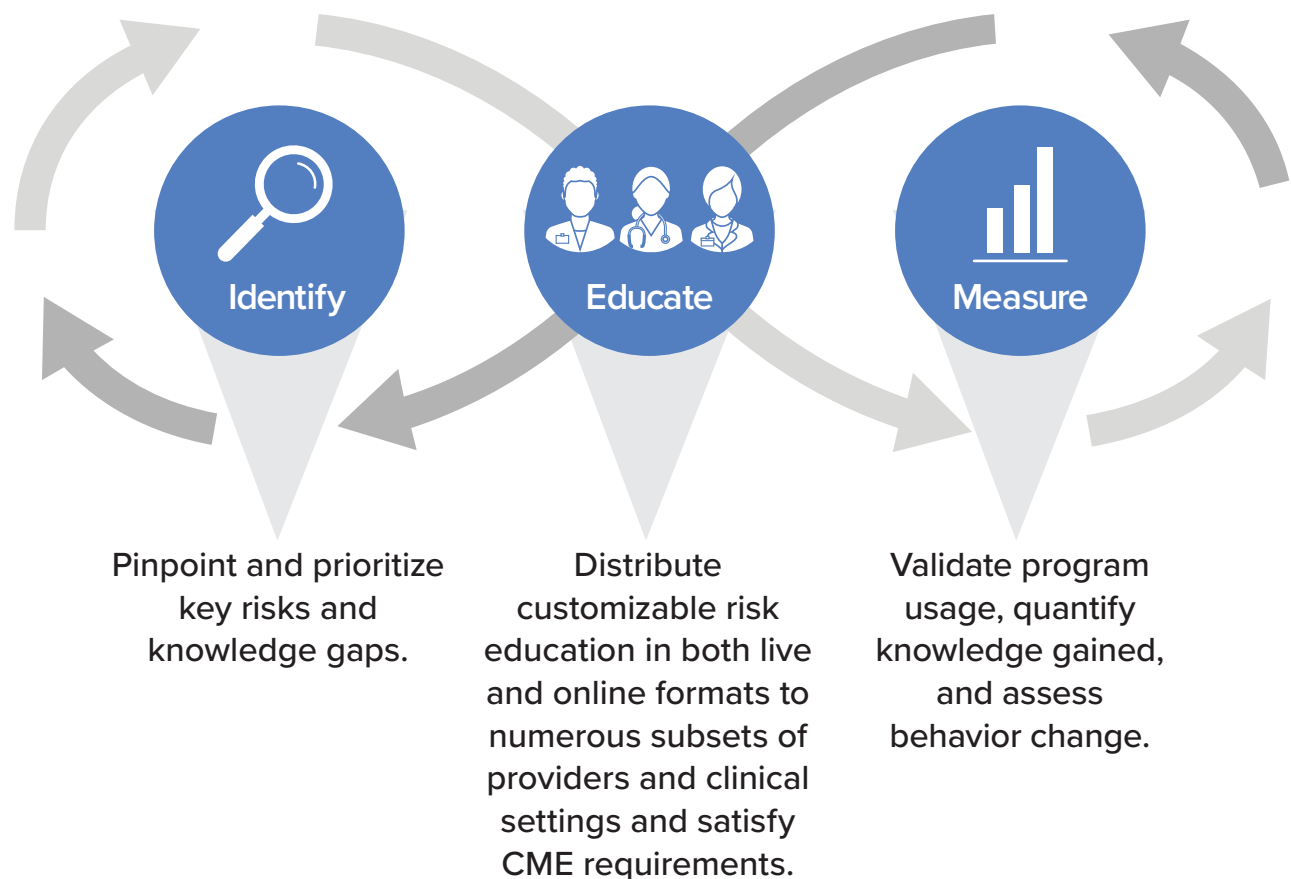


Med-IQ's courses deliver clinical risk education in a targeted, customized, and easy-to-access format.



### Med-IQ's three-tiered strategy:



To see a customized sampling of available courses based on your unique needs, please visit our interactive **Course Information Tool** at [www.med-iq.com/courses](http://www.med-iq.com/courses) or by scanning here:



## Trending Risk/High-Demand Topics

- Avoiding Misconduct Allegations
- Appropriate Use of Chaperones
- Conflict Resolution
- Dangerous Workarounds That Develop Around Staffing and Materials Shortages
- Discriminatory Conduct by Patients
- Health Equity
- Implicit Bias
- Risk Implications of Cures Act 2021
- Virtual Medicine/Telemedicine

## Risk and Patient Safety Course Topics—Live & Online

- Behavioral Health
- Communication
- Conflict Resolution
- Consultation and Referral
- Diagnostic Error
- Documentation
- End-of-Life Issues
- Controllable Factors That Impact Clinician Wellness
- Healthcare Law & Regulation
- Human Factors
- Informed Consent & Refusal
- Medication Safety
- Opioid Crisis Management
- Pain Management
- Perioperative Safety
- Post-Event Strategies
- Professionalism & Ethics
- Scope of Practice
- Sepsis Risk Management
- Supervision

## Medical Specialties Covered—Earn CME, Fulfill Reg 124 Requirement

- Anesthesiology
- Cardiology
- Critical Care/Pulmonology
- Dentistry
- Dermatology
- Emergency Medicine
- Family Medicine
- Gastroenterology
- Gynecology
- Hospitalist Medicine
- Internal Medicine
- Neonatology
- Nephrology
- Neurology
- Neurosurgery
- Obstetrics
- Oncology
- Ophthalmology
- Orthopedics
- Otolaryngology
- Pathology
- Pediatrics
- Plastic Surgery
- Podiatry
- Psychiatry
- Radiology
- Rheumatology
- Surgery
- Urology

## Target Audiences

- Advanced Practice Professionals (CME, CME/CE—both interdisciplinary and role-specific)
- Nurses (CME/CE, CE—both interdisciplinary and role-specific)
- Residents (CLR-aligned and risk management-themed GME programs organized by PGY)
- Physicians (CME, CME/CE—both interdisciplinary and role-specific)

## Clinical Settings Addressed

- Academic Medical Center
- Ambulatory Care/Office Practice
- Children's Hospital
- Acute Care
- Behavioral Health Facility
- Urgent Care Center